

**SAM'S SUPER AWESOME
MEGA PIKACHU THINGY***

*I THINK THAT'S WHAT ITS CALLED


WHAT AM I GOING TO DO

Documentary

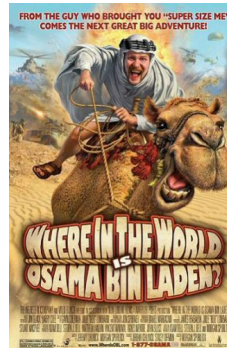
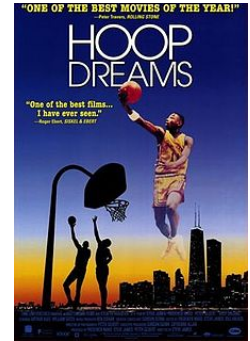
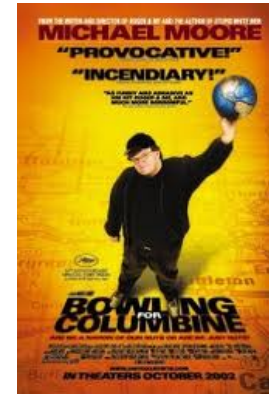
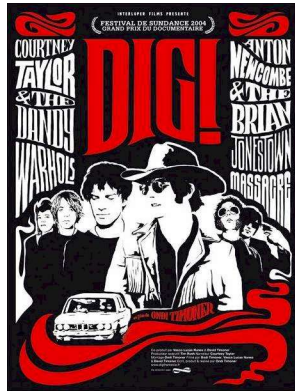
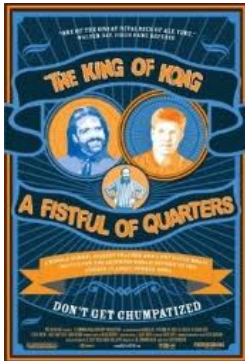


Now it places the lotion in the basket.

THE 6 TYPES OF DOCUMENTARY

- **Poetic mode**- Doesn't focus on a set timeline, little narration
 - **Expository Mode**- speak to the viewer, pose a certain POV
 - **Observational Mode**- Fly on the wall style minimal interaction
 - **Reflexive Mode**- Focus on themselves
 - **Performative Mode**- Very personal, focuses on a subject in great detail
 - **Participatory Mode**- Taking part in the documentary
- 

RESEARCH AKA WHAT DID I WATCH? (A LOT ACTUALLY)



SO IM GOING TO MAKE

20 people

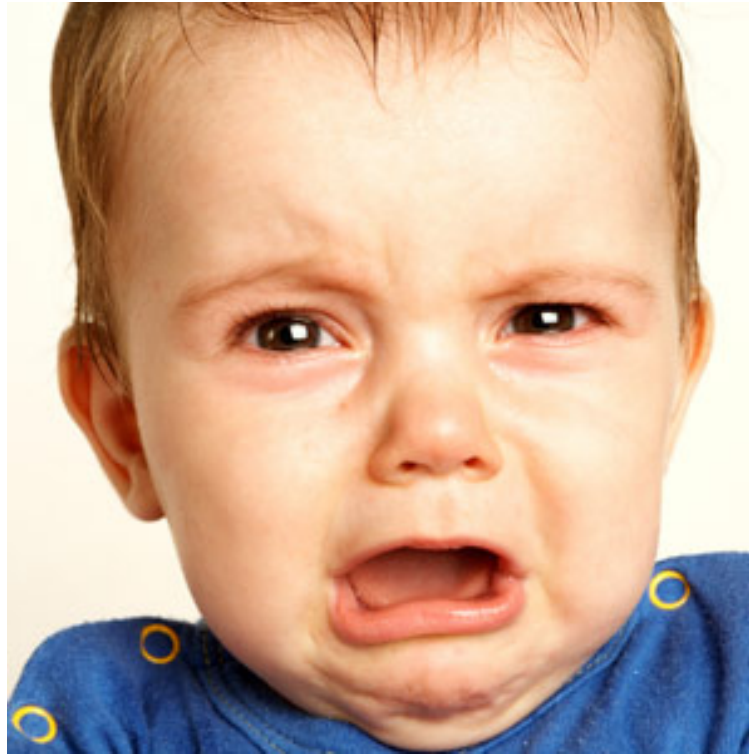
+

5mins

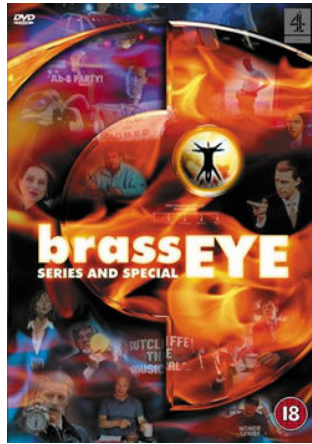
=

How long? 100 mins!!! Dear god!!!

**NAH THAT'S NOT WORKING FOR ME BRAH,
MAKE IT FUNNY CLOWN!!!**



BACK TO THE DRAWING BOARD TIME FOR SOME RE-RESEARCH BOY!!!



SO HOW IS THIS GOING TO GO DOWN

- It's the return of Cattle Grid
- And we made it to that big time
- But hard times were not far behind
- Year have passed and VH1 has come calling
- There will be talking heads
- There will be reconstructions
- Journey down a long hard road? You got it!
- There. Will. Be. Music!!!



QUESTIONS?

No? Ok I'm going to sit down now I'm not
well :'(



FREE SLIDE

